

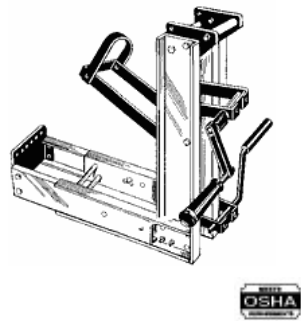
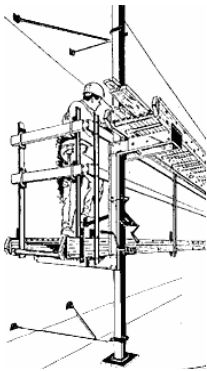
Manufactured by:



**Pumpjacks & Planks** Falcon catalogue p. 6-8

**Falcon Qual-Craft PumpJack System**

*Saves you time and money on the job*

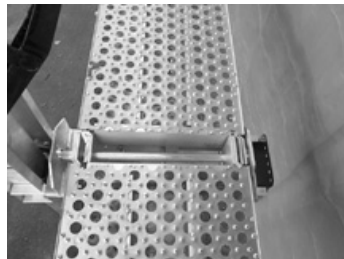


**FEATURES:**

- Dependable, durable, easy to operate, safe
- Aluminum, steel construction
- All steel parts are powdercoated
- Extra large straps to accommodate work boots
- Fully adjustable platform
- Heavy duty locking handle bushing
- Removable brake rod for easy mounting

**Butt Buddy 18" Plank Connector**

*Put your planks on a flat plane, no more overlap*



**FEATURES:**

- A unique Falcon product, the Butt Buddy adapter allows you to butt your planks rather than overlap them
- Simply replace the handle on your plank with the Butt Buddy
- Only for use on Falcon Straight 18" wide Planks
- For those buying new planks the Butt Buddy Jack Adapter is used in conjunction with FH series straight planks
- Excellent stability, unsurpassed security, 500 lb capacity

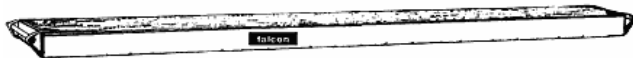
**Aluminum Planks**



**FEATURES:**

- Non-slip all weather aluminum safety grate surface
- For use with Ladder Jacks, Pumpjacks or Trigger Scaffolds
- Excellent stability, designed for two persons

**Aluminum & Wood Planks**



**FEATURES:**

- Marine grade plywood surface
- For use with Ladder Jacks, Pumpjacks or Trigger Scaffolds
- Excellent stability, designed for two persons

Platforms rated at 75 lb per square foot.